

RCVYS Representatives - June 2010

This is the list of RCVYS Representatives as of 22nd June 2010.

RCVYS Executive

RCVYS Exec - Chair

RCVYS Exec - Vice Chair

RCVYS Exec - Secretary

RCVYS Exec - Treasurer

RCVYS Exec - Members - 5x positions

David Seward - BACYP

Tim Clewer - The Mustard Tree Foundation

(admin function now carried out through Stronger Together Team for the next year)

Mary Jacobs - Reading Crossroads

Karen Ross - Relate Berkshire

Alison Steedman - Duke of Edinburgh's Award

Jackie Oversby - Home-Start Reading

Sarah Mayhew - Communicare

Vacant

Partnership Positions

Reading Children's Trust Board - 2x positions

+ Development Worker

Reading Children's Trust Agenda Setting Group

This position will be held by either of the Trust Board Members, or the RCVYS Development Worker.

Reading Children's Trust Joint Commissioning Group

+ Development Worker

Locality Steering Groups

North - 2x positions

South - 2x positions

East - 2x positions

West - 2x positions

David Seward - BACYP

Sarah Mayhew - Communicare

Ben Cross - RCVYS Development Worker

Ben Cross - RCVYS Development Worker

Hazel Broad - RVA

Ben Cross - RCVYS Development Worker

Cathy Lamsdale - Caversham Hill Toddlers

Alison Steedman - Duke of Edinburgh's Award

Karen Ross - Relate Berkshire

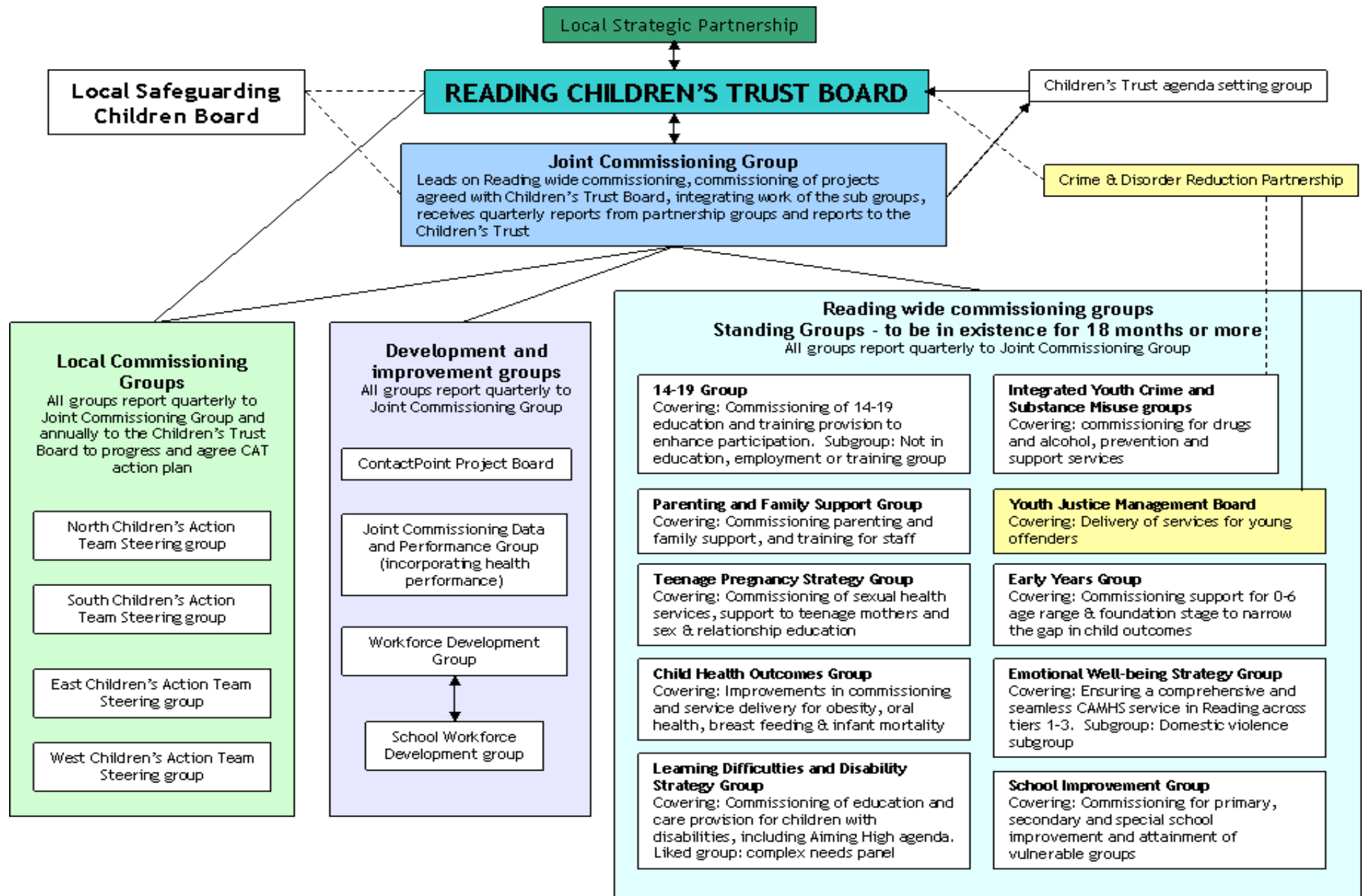
Keith Dolding - Whitley Community Church

Veera Gupta - Indian Community Association

Vacant

Tim Clewer - The Mustard Tree Foundation

Karen Dwyer - Reading Riverside Guiding



Local Strategic Partnership

Local Safeguarding Children Board

READING CHILDREN'S TRUST BOARD

Children's Trust agenda setting group

Joint Commissioning Group
 Leads on Reading wide commissioning, commissioning of projects agreed with Children's Trust Board, integrating work of the sub groups, receives quarterly reports from partnership groups and reports to the Children's Trust

Crime & Disorder Reduction Partnership

Local Commissioning Groups
 All groups report quarterly to Joint Commissioning Group and annually to the Children's Trust Board to progress and agree CAT action plan

- North Children's Action Team Steering group
- South Children's Action Team Steering group
- East Children's Action Team Steering group
- West Children's Action Team Steering group

Development and improvement groups
 All groups report quarterly to Joint Commissioning Group

- ContactPoint Project Board
- Joint Commissioning Data and Performance Group (incorporating health performance)
- Workforce Development Group
- School Workforce Development group

Reading wide commissioning groups
Standing Groups - to be in existence for 18 months or more
 All groups report quarterly to Joint Commissioning Group

- 14-19 Group**
 Covering: Commissioning of 14-19 education and training provision to enhance participation. Subgroup: Not in education, employment or training group
- Parenting and Family Support Group**
 Covering: Commissioning parenting and family support, and training for staff
- Teenage Pregnancy Strategy Group**
 Covering: Commissioning of sexual health services, support to teenage mothers and sex & relationship education
- Child Health Outcomes Group**
 Covering: Improvements in commissioning and service delivery for obesity, oral health, breast feeding & infant mortality
- Learning Difficulties and Disability Strategy Group**
 Covering: Commissioning of education and care provision for children with disabilities, including Aiming High agenda. Liked group: complex needs panel
- Integrated Youth Crime and Substance Misuse groups**
 Covering: commissioning for drugs and alcohol, prevention and support services
- Youth Justice Management Board**
 Covering: Delivery of services for young offenders
- Early Years Group**
 Covering: Commissioning support for 0-6 age range & foundation stage to narrow the gap in child outcomes
- Emotional Well-being Strategy Group**
 Covering: Ensuring a comprehensive and seamless CAMHS service in Reading across tiers 1-3. Subgroup: Domestic violence subgroup
- School Improvement Group**
 Covering: Commissioning for primary, secondary and special school improvement and attainment of vulnerable groups